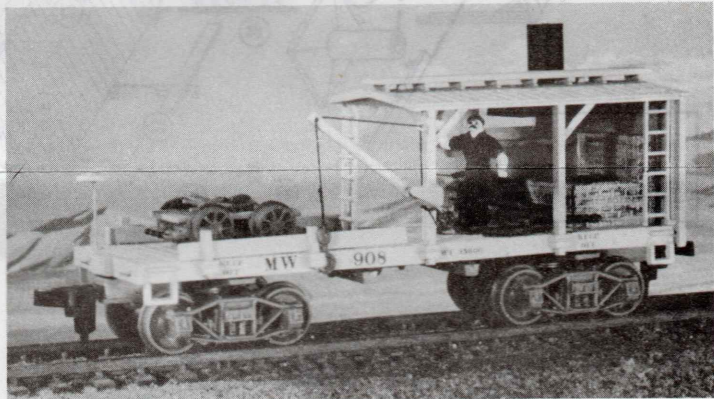


BLACKSMITH CAR PROTOTYPE INFORMATION

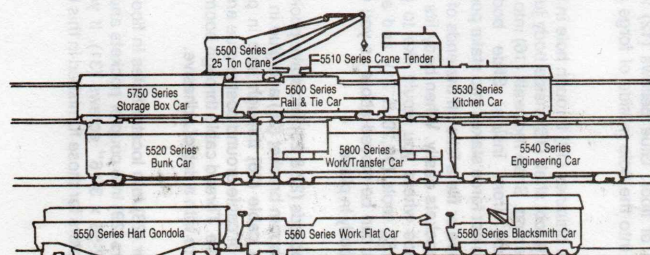
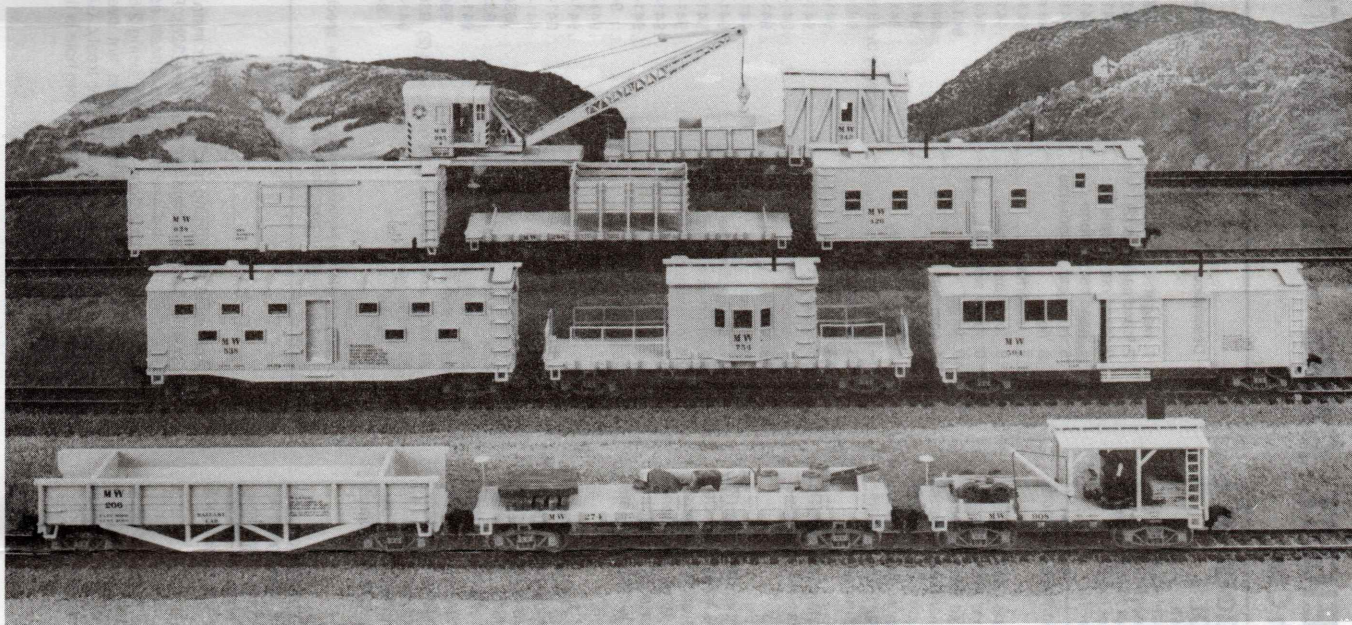
Most large railroads are divided into divisions of about 100 miles in length for administrative and operational purposes. The Maintenance of Way Department (MOW) assigns crews to the divisions and is responsible for the maintenance of the right-of-way. Responsibilities include inspection and care of the track and roadbed, drainage ditches and culverts, bridges, signals, road crossings and turnouts. The duties of the crews range from cleaning and painting the facilities and structures, to track and tie renewal, to construction of new rail lines.

Railroads usually provide transportation to and from the job sites paying for the time and expense of commuting. When the job is a distance from the Division Headquarters and requires more than a day to complete, "maintenance of way trains" are provided to house the crews thereby reducing commuting costs. Often a 10 or 12 car MOW train will be seen parked on a siding while the crew performs routine maintenance or "cleans up" after a wreck.

An economical way for the railroads to acquire MOW cars is to rebuild outmoded cars that can no longer be used in interchange or revenue service. A typical MOW train may include the various types of cars as shown in the photo below.



Blacksmith Car (5580 Series): Originally built by the Virginia and Truckee Railroad in Carson City, Nevada, the blacksmith car provided crews with on-the-spot repairs of just about any metal components. Riveting, welding and metal forming was accomplished with the forge as the blacksmith used his talents to repair everything the crew brought him.



Walthers has a variety of work cars available allowing you to build a work train to your specifications. Work trains are typically 8 to 15 cars long and no two are identical. By offering these cars undecorated and in a variety of roadnames, you can construct just the train to meet your railroads needs. These all plastic cars feature quick assembly and sprung trucks.

WALTHERS FREIGHT CARS - INSTRUCTIONS

5580 Series 30' Blacksmith Car

84-1006

1. Spend a few minutes looking over the assembly drawings and parts contained in this kit. Assembly will be easier after you are acquainted with the parts and familiar with the procedures. Use a good plastic cement or ACC adhesive for assembling plastic parts. When using a plastic cement, remove paint from surfaces to be bonded, or joint will not hold. We recommend Walthers Goo® for cementing metal to plastic.

SUGGESTED TOOLS

- ✓ plastic glue
- ✓ modelers knife
- ✓ screwdriver
- ✓ paint to match car
- ✓ paint brush
- ✓ small file

2. You may find it much easier to paint detail parts while they are on the sprues. If so, first remove any flash from parts using a sharp hobby knife paying particular attention to moving parts such as trucks and couplers. Paint the weight (1) and detail parts. When removing parts from the sprues, **always** use a hobby knife to prevent damage. Touch-up areas where sprues were removed, most Walthers Blacksmith Cars are painted with Scalecoat II® MOW Gray, Box Car Red, Reefer Yellow, or Aluminum.

3. Assemble the hand car by gluing axles (2) to hand car wheels (3). Set wheel assemblies onto hand car platform (4) and glue hand car underframe (5) in place.

Glue weight (1) to underside of floor (6). Cement underframe (7) to floor assembly. Glue forge sides (8 & 9) onto forge (10). Cement forge assembly to floor using locating pins on floor to position. Cement coal bin (11) in place adjacent to forge and along outside edge of floor. Glue bellows (12) in place by inserting bellows pipe into the hole in side of forge and locator pins into holes in floor.

4. Insert forge chimney (13) through hole in body (14) and glue in place. Cement tool shelf (15) inside body just below and parallel to window opening. Snap roof walk (16) into holes of roof and cement in place from inside. Slide body shell over floor assembly—do not force stakes into stake pocket openings, if they do not fit, shave or file a little off the ends of stakes to allow them to slide into pockets easily. When body fits onto floor assembly, you can decide where you would like to place the anvil (17), blacksmith (18), tools (19, 20 & 21), and assembled hand car. These details can be moved about as you wish, glue into place then cement body in place.

5. Glue side boards (22 & 23) into stake pockets. Insert boom (24) onto shaft of boom bracket (25) and glue in place (see **Detail A**). Thread boom cable (26) through hole in post clevis. You may either tie end of cable around post or glue end to post with a small dab of adhesive. Thread cable through boom eye and boom hook (27) and secure with a dab of adhesive.

6. Glue ladder (28) into locator holes in floor and to roof of body. Place couplers (29) into coupler pockets and fasten covers (30) in place using 2-56 x 3/16" screws (31). If you wish to substitute Kadee® couplers for those furnished in this kit, use #5s.

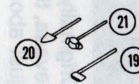
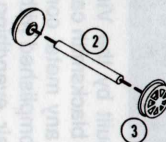
DESCRIPTION PARTS LIST Part Number

Description	PARTS LIST	Part Number
1. weight		947-698
2. hand car axles (2)		941-90136
3. hand car wheels (4)		941-90137
4. hand car platform		941-90134
5. hand car underframe		941-90135
6. floor	specify by kit number	
7. underframe		941-90115
8. forge side, right		941-90121
9. forge side, left		941-90122
10. forge		941-90120
11. coal bin		941-90123
12. bellows		941-90124
13. forge chimney		941-90116
14. body	specify by kit number	
15. tool shelf		941-90119
16. roof walk		941-90117
17. anvil		941-90125
18. blacksmith		941-90130
19. axe		941-90131
20. shovel		941-90132
21. sledge hammer		941-90133
22. short side board		941-90139
23. long side board		941-90138
24. boom		941-90127
25. boom bracket		941-90126
26. boom cable		949-893
27. boom hook		941-90128
28. ladder		941-90129
29. couplers (2)		941-90000
30. coupler pocket covers (2)		941-90143
31. screws 2-56 x 3/16 roundhead (2)		930-1032
32a. sprung truck kit (1 pair)		933-1237
32b. rigid truck (2)		941-97021
33. washers (4)		930-1273
34. king pin screws 2-56 x 3/8 roundhead (2)		930-1035
35. brake wheel		941-90140
36. brake staff		947-701

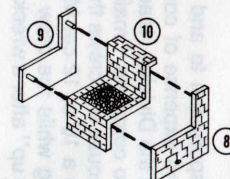
When ordering replacement parts, please specify **kit number, part number and color.**

7. Assemble the sprung trucks (32a) per instructions or snap wheelsets into rigid truck frames (32b). Place two washers (33) on bolster boss and attach assembled trucks to underframe/floor assembly using 2-56 x 3/8" roundhead king pin screws (34), do not over tighten trucks to bolsters, they should pivot freely. Glue brake wheel (35) to staff (36) and cement into hole in floor.

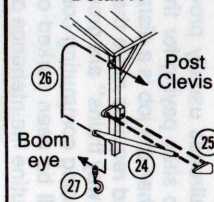
Hand Car Assembly



Forge Assembly



Detail A



If stakes do not fit into stake pockets easily, file or shave a little plastic off ends of stakes.

